



PART OF  
**marel**

# FALCON hybrid basic

100 mm  
200 mm  
300 mm  
400 mm  
500 mm  
600 mm



For bone-in or boneless products – always focussing on your yield: **FALCON hybrid basic**



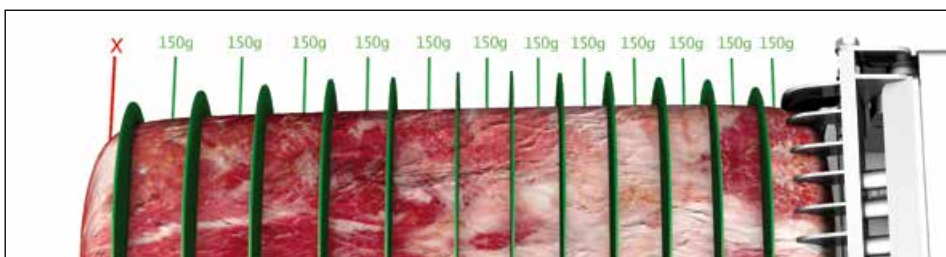
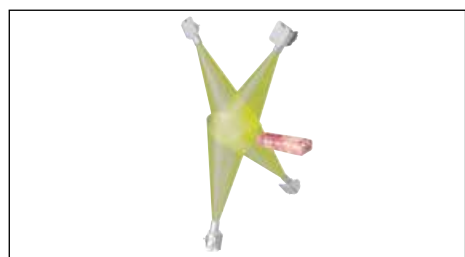


## We slice even more precisely. The savings are all yours.

Thanks to the FALCON hybrid basic, you can now benefit from the technical advances on offer from TREIF even if you are working with boneless meat. Making sure that you get as much as you can when cutting products, we will get one more slice for you from every piece, be it boneless or bone-in, whether you are cutting to an exact weight or to a set thickness. A unique 4D camera system joins forces with top-speed computer technology. Want to bet that your product has never before been measured this precisely? As you will see, the FALCON hybrid basic knows exactly where to make the cut and can even use the gripper piece, for example - a piece which maximises your return.



## Advanced precision – always focussing on your yield



### Brilliant weight precision

Brilliant weight precision is the basis for the unbeatable yield. No other system is as precise as the complete 360° measurement of the 4-D camera system from TREIF.

### Every slice counts

The software can be used to calculate the product feed so that all slices have exactly the same weight, even the gripper piece and the piece before the gripper.

That means best results for your yield balance.



## FALCON hybrid basic: perfects your yield balance



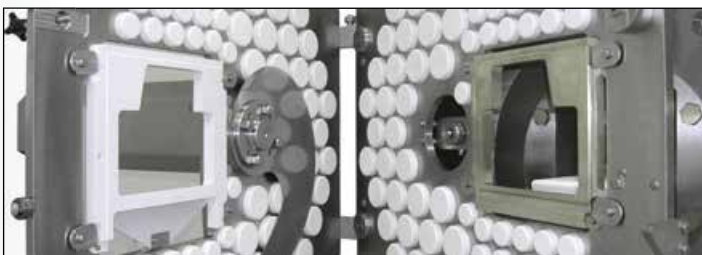
### Sturdy support – more yield

A stable product is the most important prerequisite for cutting processes. No optimum yield without precision. No precision without absolute stability. The new driven, contour-controlled TREIF down holder works perfectly here, together

with the proven product gripper from TREIF. Both have got a good grip on the product. A team you can rely on!



## Huge potential



### Clean cut

The patented sickle blade is firmly secured between two stainless steel plates. This so-called sandwich guidance system prevents wedge cuts.



### Various possibilities

Due to the software option "frying time guarantee" the frying time can be indicated on the trays.







## One machine – Numerous options



Various line solutions are possible, e.g. the Smartline (at the very top) and the fully automatic solution with robot technology (above).

### Your benefits at a glance:

- Continuous loading – top weight results (a 4D camera system fully captures and measures the product)
- Yield-optimised slicing thanks to 4D camera system in conjunction with innovative software programs
- Ideal for cutting according to slice thickness without weight specification
- Portioning of one product in various weights with the touch of a button / calculation of the optimum slice thickness in order to achieve the target weight
- Highly flexible cutting system featuring a range of optional modules such as pre-scale / dynamic portion separation / grouping unit/check weigher / sorting station with pusher(s) to eject slices that are overweight or under-weight (optional)/ flip-flop belt
- Different line solutions, e.g. Smartline, feeding line or express sorter for harmonious process operation with continuous product flow and efficient work processes

### Technical data:

|   |  |
|---|--|
| Max. cuts per minute<br>(Theoretical maximum value)                               | 550  |
| Cross-section of product<br>W x H (mm/inch)                                       | depending on application,<br>max. up to 260 x 155; 10 1/5" x 6 1/10" |
| Max. infeed length (mm/inch)  | gripped: 800; 31 1/2"  |
| Housing dimensions (mm/inch)  |  |
| Length with pre-belt without<br>check weigher                                     | 4,422; 174" / depending on<br>model max. 4,688; 185"                 |
| Length with check weigher and<br>sorting station(s)                               | on request   |
| Width / Height (mm/inch)  | 1,348 / 2,223; 53" / 87 1/2"   |
| Connected load (kW)   | 8.6 without check weigher;<br>9.6 with check weigher                 |
| Applications  | depending on product,<br>up to -4 °C / 24.8 °F                       |
| Weight machine (50 Hz/60 Hz)<br>with pre-belt, without portioning<br>belt (kg/lb) | approx. 1,589; 3,503<br>depending on model max. 1,910;<br>4,211      |
| Product specific accessories  | on request   |

#### HEADQUARTERS:

TREIF Maschinenbau GmbH  
Toni-Reifenhäuser-Str. 1  
D-57641 Oberlahr  
Tel. +49 2685 944 0  
Fax +49 2685 1025  
E-Mail: info@treif.com

#### LOCATIONS:

TREIF USA Inc.  
50 Waterview Drive, Suite 130  
USA-Shelton CT 06484  
Tel. +1 203 929 9930  
Fax +1 203 929 9949  
E-Mail: treifusa@treif.com

TREIF U.K. Ltd.  
Genesis House, Poole Hall Road,  
Poole Hall Industrial Estate  
Ellesmere Port, GB-Cheshire CH66 1ST  
Tel.: +44 (0) 151 3506100  
Fax: +44 (0) 151 3506101  
E-Mail: treifuk@treif.com

TREIF Italia S.r.l.  
Via Sant'Agnese 43-45  
40132 Bologna, Italia  
Tel.: +39 051 728138  
E-Mail: info.it@treif.com

TREIF S.R.L.  
22, rue des Tuileries  
F - 67460 Souffelweyersheim  
Tel.: +33 3 88184018  
Fax: +33 3 88184019  
E-Mail: info-france@treif.com

TREIF in Belgium  
Villalaan 21  
B-9320 Aalst  
Tel.: +32 53 770813  
Fax: +32 53 789666  
E-Mail: jo.luybaert@treif.com

TREIF Sp. z o.o.  
ul. Jana Kochanowskiego 49  
01-864 Warszawa  
tel: +48 506 412 522  
service: +48 506 413 197  
E-Mail: info@treif.com